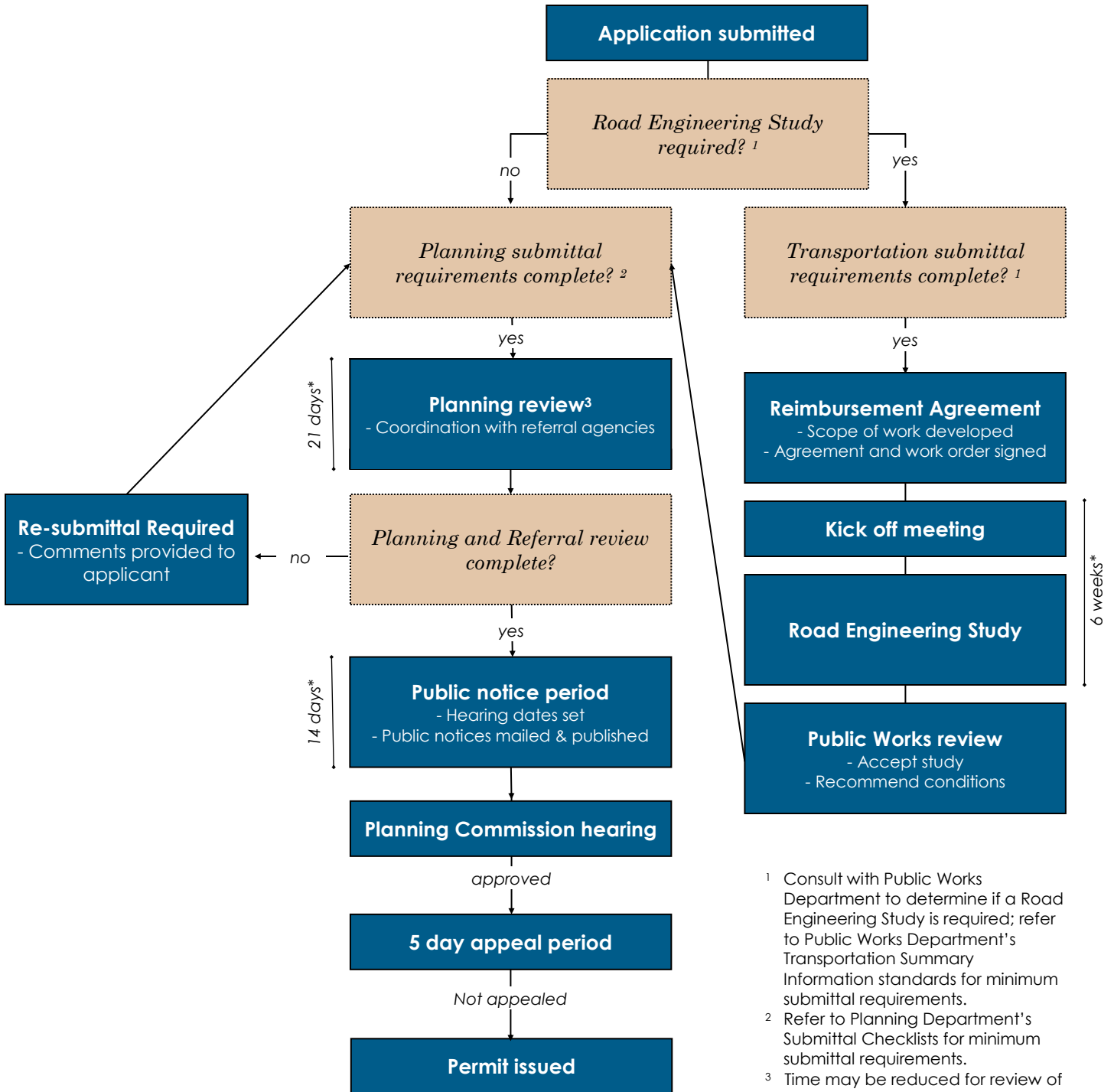




ROUTT COUNTY

PLANNING DEPARTMENT
136 6th Street, Suite 200
Steamboat Springs, CO 80477
Ph: (970) 879-2704

REVIEW PROCESS CONDITIONAL USE PERMITS



¹ Consult with Public Works Department to determine if a Road Engineering Study is required; refer to Public Works Department's Transportation Summary Information standards for minimum submittal requirements.

² Refer to Planning Department's Submittal Checklists for minimum submittal requirements.

³ Time may be reduced for review of re-submitted items.

* Timeframes are approximate.